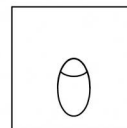
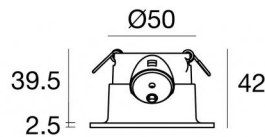




Wall Lights | 1 x powerLED 2 W DC 630 mA | CRI 80
86563M70



52

Technical data

Type	Encasement with flange
Installation position	Wall lights
Installation environment	Outdoor
Light Source	LED
Circuit structure	powerLED
Optics	Asymmetric Wallwasher
Nominal power	2 W DC
Source lumens	219 lm
Current intensity	630mA
CCT / Tone	2700 K
Colour rendering index	80 Ra
C.C. / C.V.	CC
Safety class	3
IP	IP65
IK	IK10
Glow wire test	850°
Direct mounting on normally flammable surfaces	Yes
CE	Yes
Driver included	No
Dimmable article	DALI - 1-10V
Directional	No
Tilting	No
Walk-over	No
Drive-over	No
Cable included	Yes
Cable length	1 m
Resin potting	Yes
Type of light emission	Single emission
Net weight	0.190 Kg
Electrostatic discharge protection	No
Surge protection	No

Finishing casing

Material	Aluminium
Colour	Embossed white RAL 9003
Processing	Open pore anodizing + Powder Coating

Electronics



89420
On/Off Driver 198~264V AC / 180~275V DC (1 - 2 art.)



99179
On/Off Driver 198~264V AC (3 - 6 art.)



99186
On/Off Driver 198~264V AC (6 - 12 art.)



83102
DALI-2 Controller (1 - 14 art.)

Wall Lights | 1 x powerLED 2 W DC 630 mA | CRI 80 | Base 86563M70

Single emission wall lights for outdoor application. The super warm LED light source with a asymmetric wallwasher light distribution is composed of 1 powered LEDs with CCT of 2700 K and a CRI 80; the source luminous flux is 219 lm, with a 109.5 lm/W nominal luminous efficacy.

The device body is made of aluminium and features a embossed white ral 9003 finish, processed by means of open pore anodizing + powder coating. The ingress protection degree is IP65; the total weight is of 0.190 kg. The power supply driver is not provided and is to be ordered separately.

The total absorbed power is 2 W. The power supply cable is included and features a 1 m length.

The device features protection class III and can be wall lights-mounted, with a 52 mm diameter hole (in plasterboard) with an outer casing, code 84338(for concrete or masonry).

Compliant with the EN 60598-1 standard and its specific provisions.

Energy efficiency class

This product contains a light source of energy efficiency class D.

Illuminotechnical Features

Light Output Ratio (LOR)	50 %
Source lumens	219 lm
Delivered lumens	110 lm
Consumption	2,0 W
Luminaire efficacy	55 lm/W
Colour temperature	2700 K
Standard Deviation of Colour Matching	1.5 Step
Colour rendering index	80 Ra

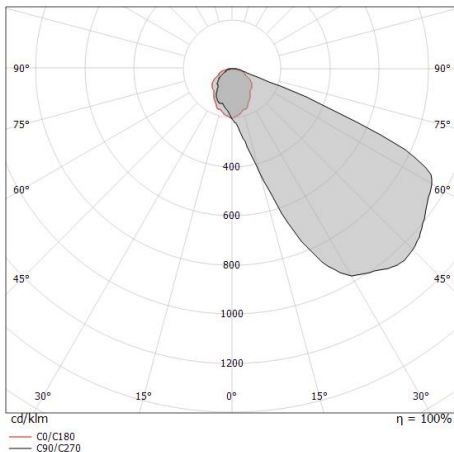
Standard Operating Ambient Temperature	-20 / +50°C
Ordinary temperature on the glass	40°C

LED Life / Failure Ratio

L70 B10 C0 361980h (at Tj 60 Ta 25)

OPTICAL

C0/C180 optics	104°
Light distribution symmetry	Asymmetrical



Distance [m]	Cone diameter [m]	Illuminance [lx]
0.5	1.29	$\frac{E(0^\circ)}{E(C0)}$ 90 52.2° 10
1.0	2.58	$\frac{E(0^\circ)}{E(C0)}$ 23 52.2° 3
1.5	3.87	$\frac{E(0^\circ)}{E(C0)}$ 10 52.2° 1
2.0	5.16	$\frac{E(0^\circ)}{E(C0)}$ 6 52.2° 1
2.5	6.45	$\frac{E(0^\circ)}{E(C0)}$ 4 52.2° 0
3.0	7.74	$\frac{E(0^\circ)}{E(C0)}$ 3 52.2° 0

Distance [m] Cone diameter [m] Illuminance [lx]
 — C0/C180 (Half-peak divergence: 104.4°)



Quara_Q | Wall Lights | Accessories
86563M70



Outer casing

Type of installation: masonry L=72mm, H=62mm, D=62mm

Code

84338